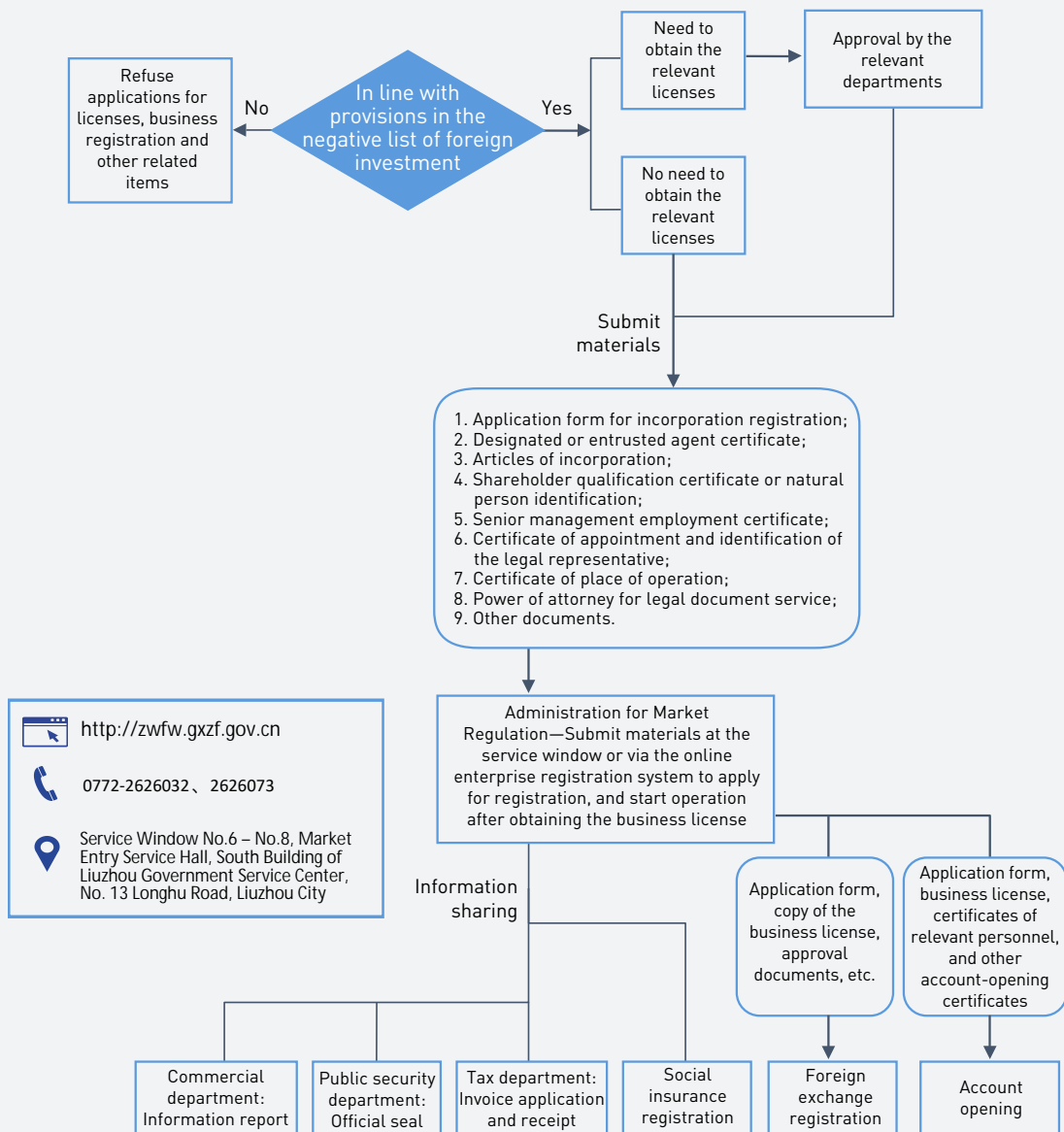


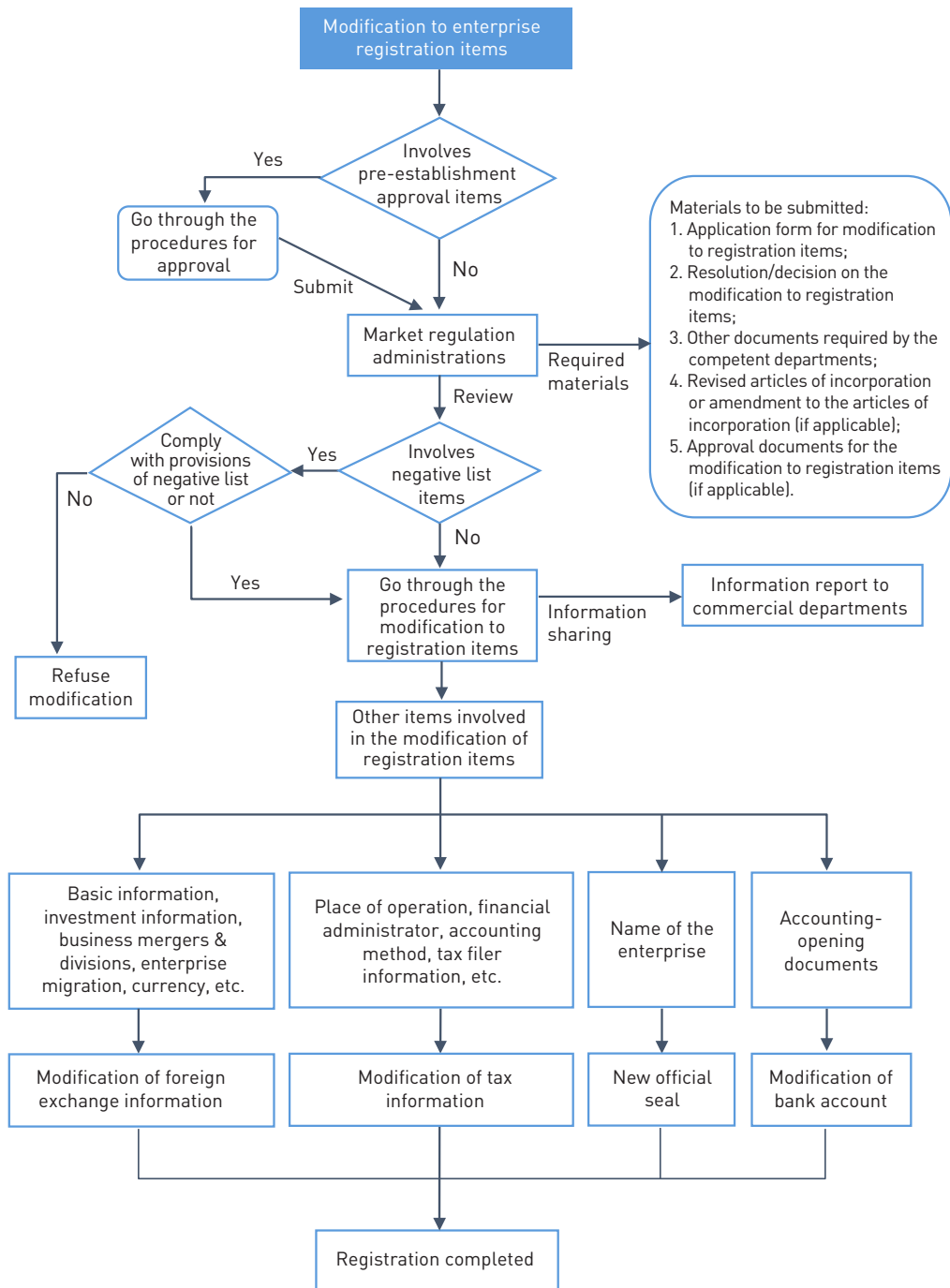
Procedures for Foreign Investment


1 Enterprise Incorporation/Modification


1.1 Enterprise Incorporation




1.2 Enterprise Modification

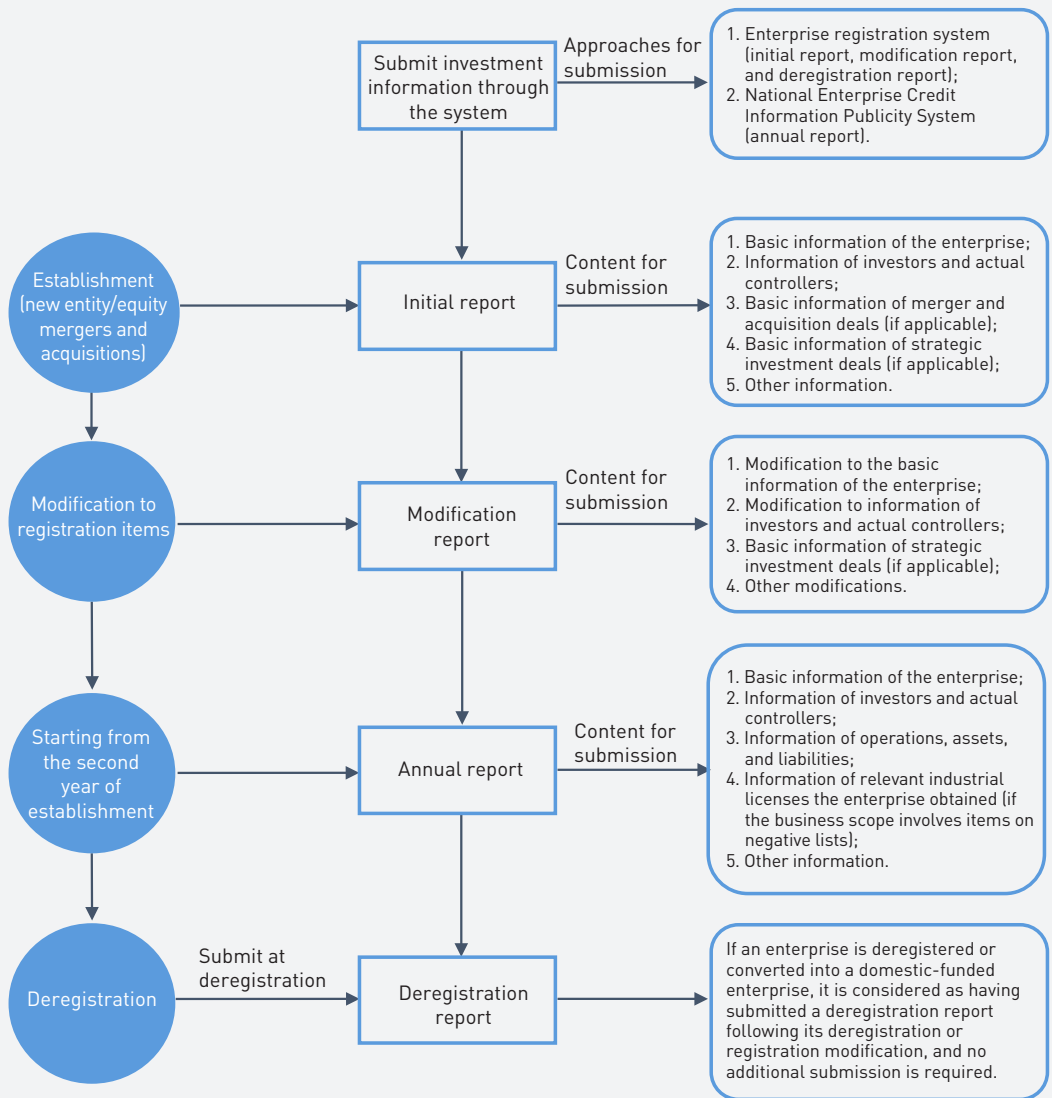


 <http://zwfw.gxzf.gov.cn>

 0772-2626032、2626073

 Service Window No.6 – No.8, Market Entry Service Hall, South Building of Liuzhou Government Service Center, No. 13 Longhu Road, Liuzhou City

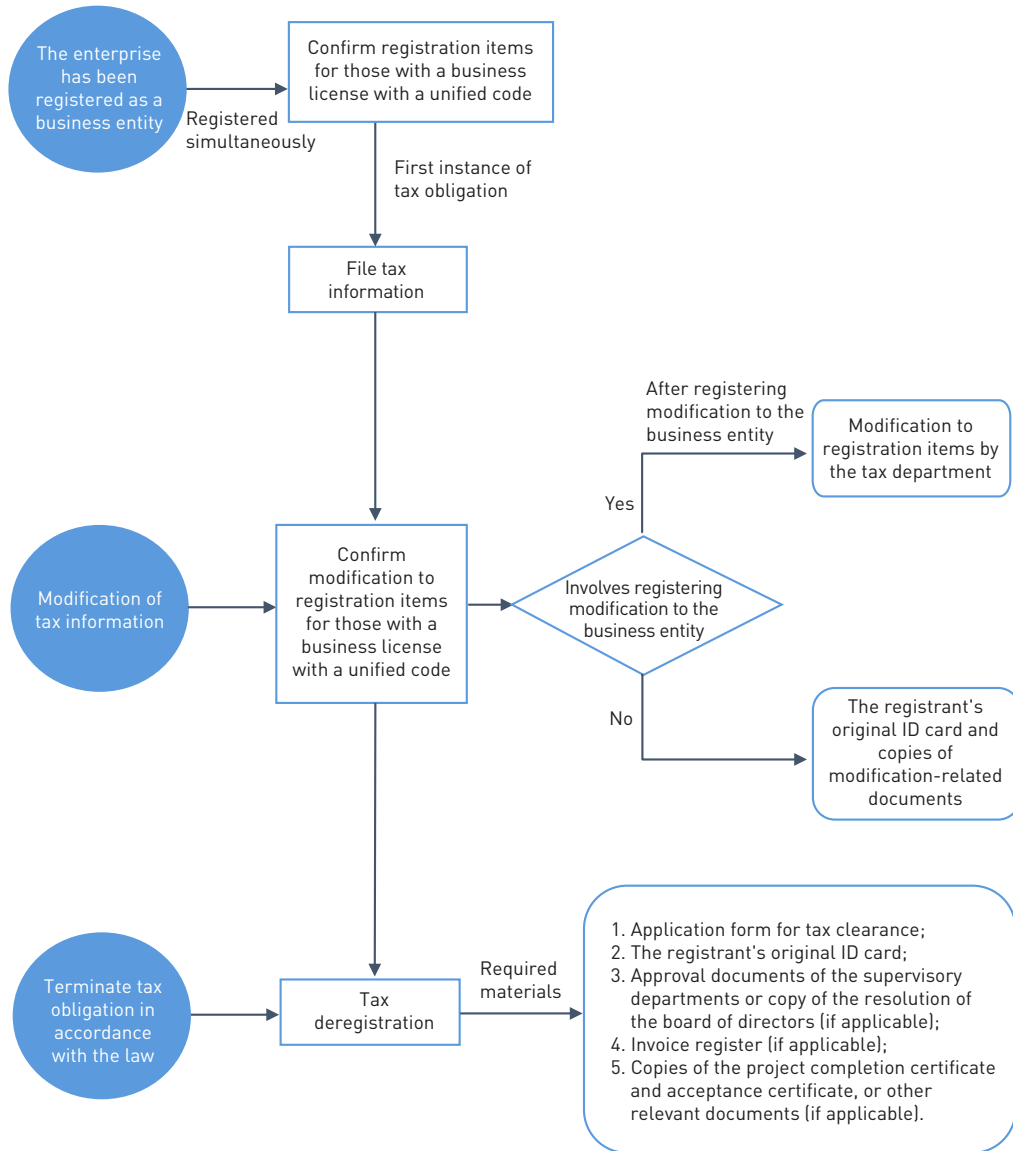
1.3 Enterprise Information Report



0772-2620925, Liuzhou Municipal Market Regulation Bureau

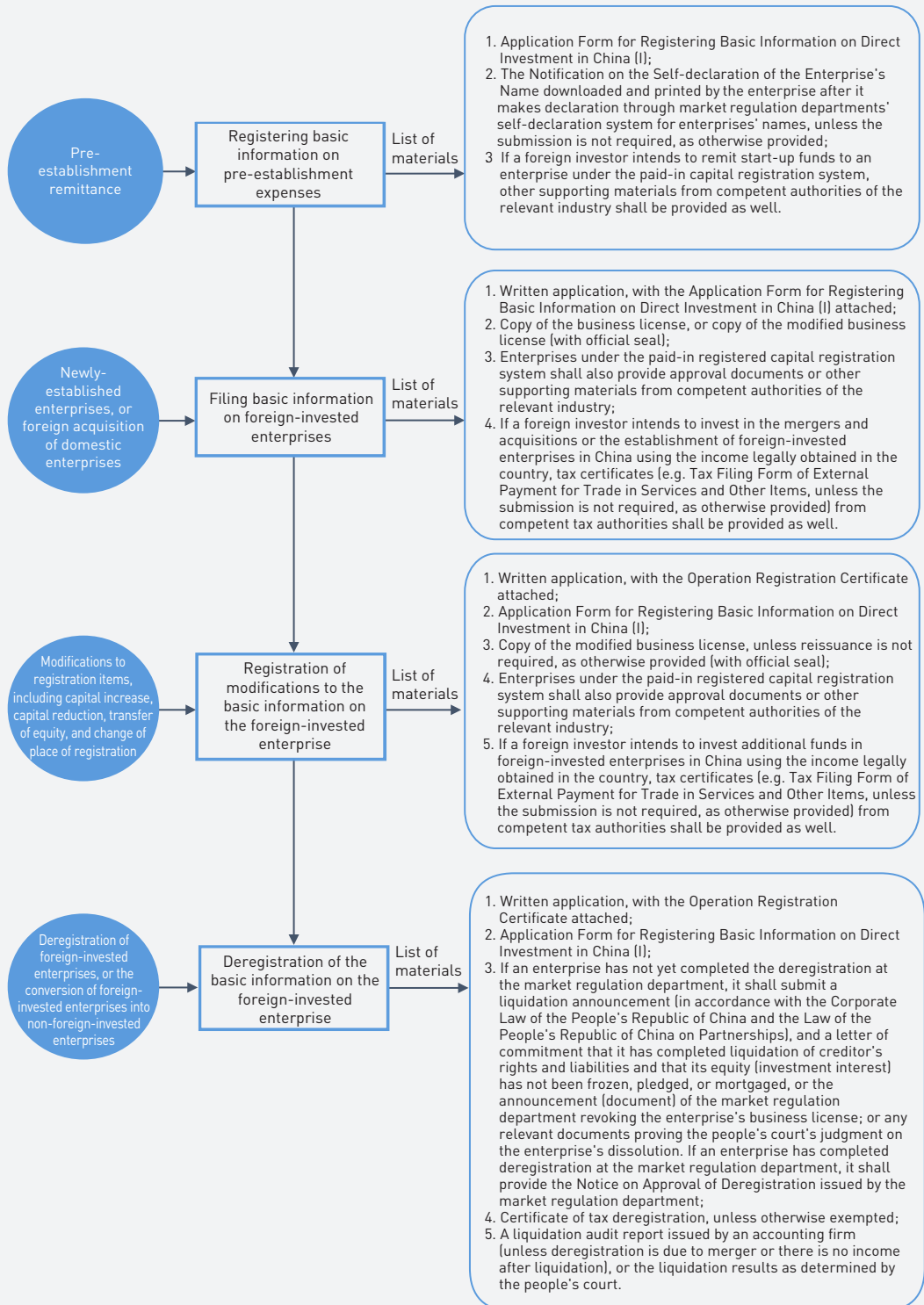
0772-2631277, Liuzhou Municipal Commerce Bureau

2. Taxation

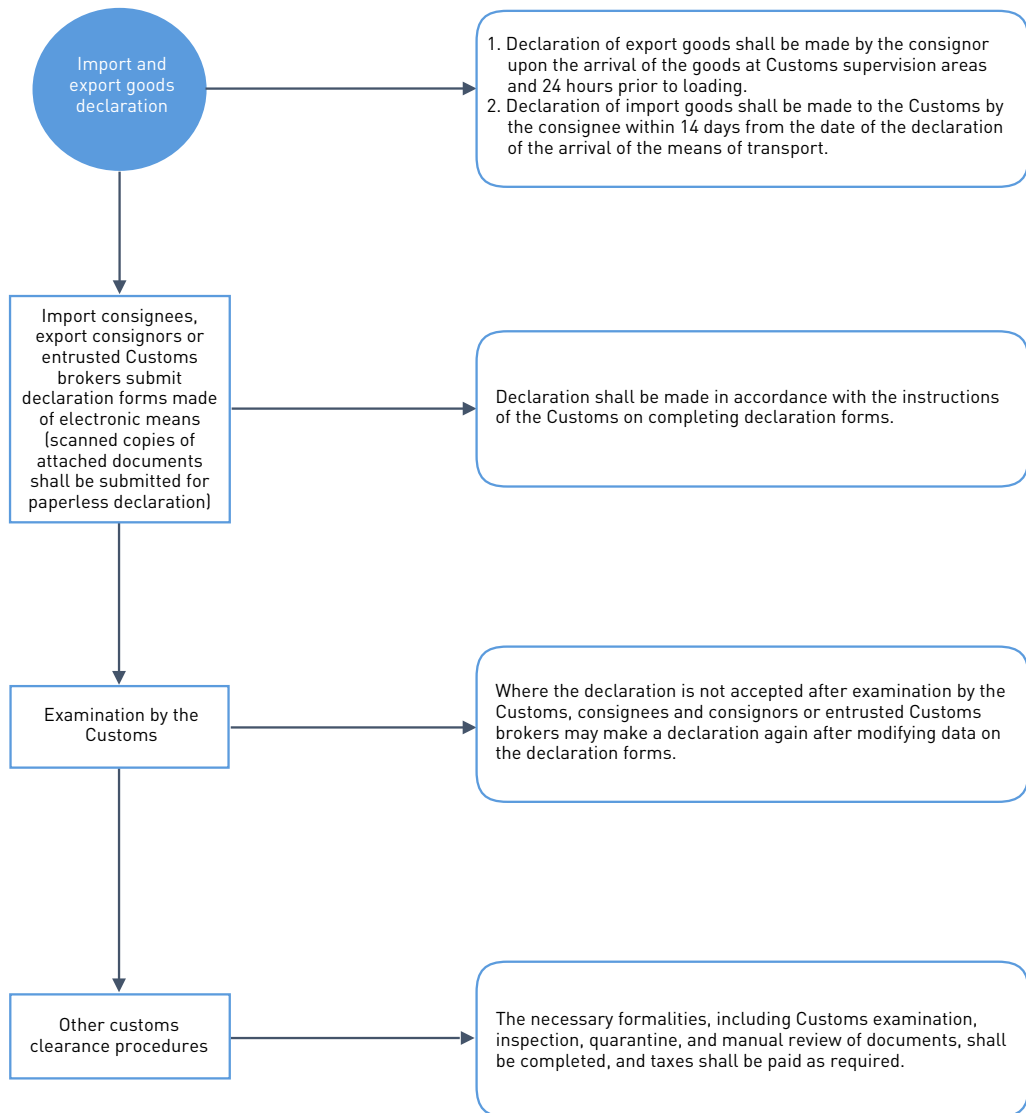


0772-2312366, Liuzhou Municipal Tax Service, State Taxation Administration

3. Foreign Exchange



4. Customs



0772-8855801, Liuzhou Customs District P.R. China